

Cherry Creek Basin Water Stewardship and Education Initiative

A Compilation of Water Quality Education Efforts in the Cherry Creek Basin

Needs Assessment
And
Recommendation for Future Efforts

July 30, 2004

Prepared for:
The Cherry Creek Basin Water Quality Authority

Prepared by:
The Cherry Creek Stewardship Partners
Education Committee

Sponsored by:
The Cherry Creek Basin Water Quality Authority
U.S. Environmental Protection Agency
Cherry Creek Stewardship Partners



The Cherry Creek watershed is one of the dominant geographical and cultural features of the Denver metropolitan area. Upstream of the Cherry Creek Dam, the Cherry Creek Reservoir watershed consists of 386 square miles of some of the fastest growing communities in the country. Six hundred miles of stream corridor, the alluvial aquifer that provides water supply to residents in the area, two state parks, Cherry Creek Reservoir and an extensive regional trail system provide a highly valued resource to the residents of Colorado. The Creek connects communities in Denver, Arapahoe and Douglas counties. For centuries, this connection was understood by Native Americans, trappers, traders and adventurers who followed the Cherokee trail north from the Santa Fe Trail on toward the confluence of Cherry Creek and the South Platte River, the site of Denver's original settlement. Today some of this history is preserved in two historic stage stops located along the trail, one the 17-Mile House in Arapahoe County and the other the 4-Mile House in Denver.

Though early settlers in the region were warned of the potential for flooding of Cherry Creek, communities grew along its banks. The inevitable flooding and loss of life and property led to the construction of Cherry Creek reservoir by the U.S. Army Corps of Engineers for flood protection in 1950. In 1959, recreational demands on the reservoir led to the creation of the Cherry Creek State Recreation Area, Colorado's first state park. Today, the park is Colorado's busiest with an estimated 1.5 million visitors a year. A trail system from Castlewood Canyon in Douglas County through the State Park and on to the South Platte confluence in Denver is the busiest trail system in the state and, like the creek, it connects communities along its entire length. Cherry Creek has become one of Colorado's best examples of local people restoring and becoming reconnected to their stream or river.

In 2003, The Cherry Creek Basin Water Quality Authority stepped forward to support the Cherry Creek Stewardship Partners in the development of a comprehensive and coordinated education strategy and action plan in order to further the mission of the Basin Authority, as well as to meet its regulatory requirements. This document contains a compilation of the key education and public involvement goals, strategies and activities that will be used to engage the community in active stewardship of Cherry Creek, parks, open space, trails and tributaries within the watershed. The purpose of active stewardship is to preserve, protect and restore water quality, wildlife habitat, recreational opportunities and the natural function of a watershed.

Acknowledgements

The individuals and organizations referred to throughout this report make a conscientious effort to provide useful information and opportunities for interested individuals to understand the watershed and have a positive impact on the conservation of our valuable natural resources.

The following individuals were directly involved in the preparation of this report and the Stewardship Partners wish to acknowledge their invaluable assistance:

Paul Hindman, PE
Urban Drainage & Flood
Control District

Casey Davenhill
Cherry Creek Stewardship
Partners

Brian Bertsch
Arapahoe County Water
And Wastewater Authority

Darren Mollendor, PE
City and County of Denver
Wastewater Management
Division

Michelle Wind, PE
Brown and Caldwell

Lavanya Gullapalli
Brown and Caldwell

Lanae Raymond
Arapahoe County Engineer

Jim Dederick
Douglas County Environmental Engineer/Hydrologist

Reference Documents

Extensive planning, public outreach and information gathering has resulted in the body of documents referred to in the process of compiling this report. These documents include:

- A. COLORADO DEPARTMENT OF PUBLIC HEALTH AND ENVIRONMENT WATER QUALITY CONTROL COMMISSION REGULATION NO. 72
(CHERRY CREEK RESERVOIR CONTROL REGULATION 5 CCR 1002-72)**

- B. STORMWATER DISCHARGES ASSOCIATED WITH CHERRY CREEK RESERVOIR DRAINAGE BASIN MUNICIPAL SEPARATE STORM SEWER SYSTEMS (MS4S) GENERAL PERMIT IN COLORADO DISCHARGE PERMIT NUMBER COR-080000
(COLORADO DEPARTMENT OF PUBLIC HEALTH AND ENVIRONMENT WATER QUALITY CONTROL DIVISION)**

- C. CHERRY CREEK RESERVOIR WATERSHED PLAN 2003
CHERRY CREEK BASIN WATER QUALITY AUTHORITY**

- D. STEWARDSHIP PRACTICES FOR THE CHERRY CREEK WATERSHED CHERRY CREEK STEWARDSHIP PARTNERS**

- E. CHERRY CREEK WATERSHED
SMART GROWTH FOR CLEAN WATER REPORT
CHERRY CREEK STEWARDSHIP PARTNERS**

- F. CHERRY CREEK STATE PARK INTERPRETIVE MASTER PLAN**

- G. ARAPAHOE COUNTY STORM WATER CO-OP
STORM WATER PERMIT MEASURABLE GOALS**

- H. DOUGLAS COUNTY STORM WATER CO-OP
STORM WATER PERMIT MEASURABLE GOALS**

- I. COLORADO WATER QUALITY FORUM
GUIDANCE FOR COLORADO'S STORM WATER PHASE II**

Table of Contents

Executive Summary	2
Section 1.0	
Scope of Cherry Creek Basin Water Stewardship and Education Initiative	6
Section 2.0	
Cherry Creek Stewardship Partners Organization Profile	8
Section 3.0	
Stakeholder Profile and Situation Analysis	10
Cherry Creek Basin Water Quality Authority	10
Cherry Creek Stewardship Partners.....	11
Cherry Creek State Park	11
MS4 Permittees.....	12
Section 4.0	
Common Goals	14
Section 5.0	
Coordinated Education Approach.....	15

Tables

Table 1 – Basin Authority Education Goals

Table 2 – Cherry Creek Stewardship Partners Educational Goals

Table 3 – MS4 Permittee Education Goals

Table 4 – Cherry Creek State Park Educational Mandate

Table 5 – Education Goals - Common Elements

Table 6 – 2-Year Action Plan for Education in Watershed

Appendix

A. Water Education Resources

B. MS4 Permittees in the Cherry Creek Basin

Executive Summary

The purpose of the Cherry Creek Basin Water Stewardship and Education Initiative (the Education Initiative) is to set forth the approach recommended by the Cherry Creek Stewardship Partners (Stewardship Partners) and the Cherry Creek Basin Water Quality Authority (Basin Authority). In coordination with key stakeholders in the Cherry Creek basin the Education Initiative makes recommendations and identifies next steps for the development and implementation of a public information and education outreach program for the Cherry Creek basin that meets the regulatory requirements of Cherry Creek Reservoir Control Regulation No. 72. For purposes of the Education Initiative, the basin includes the Cherry Creek Reservoir watershed as defined in Watershed Plan 2003, prepared for the Basin Authority by URS Corporation, August 2003 as well as Cherry Creek below the dam to its confluence with the South Platte River in downtown Denver.

With support from the Basin Authority, the U.S. Environmental Protection Agency and member partners, the Stewardship Partners have engaged key stakeholders to compile a record of goals, strategies and activities planned to promote education and public awareness of water quality issues. The key education and public involvement goals can be summarized from the attached tables as follows:

Basin Authority – Work cooperatively with watershed groups and local agencies to promote holistic watershed health and to promote public awareness and involvement in watershed management. (Table 1.0)

Stewardship Partners– Provide an open forum with regularly scheduled activities, training and networking opportunities among local land use jurisdictions, community groups and interested individuals. Serve as a clearinghouse organization to provide opportunities and information to an inclusive group of stakeholders in the Cherry Creek watershed. Develop ongoing support from member Stewardship Partners in order to leverage efforts and resources through an efficient and cost-effective partnership. (Table 2 .0)

Cherry Creek State Park (Park) – Make meaningful connections among the multiple values of outdoor recreation quality and opportunities, wildlife habitat and water quality. Focus attention on what everyone in the basin can do to promote better quality of life and water quality. Serve as the focal point for watershed education. (Table 3.0)

Municipal Separate Storm Sewer System (MS4) Permit Holders (MS4 Permittees) – Implement a public education program to distribute educational materials to the community or conduct equivalent outreach activities about the impacts of storm water discharges on local water bodies and the steps that the public can take to reduce pollutants in stormwater runoff. (Table 4.0)

In the case of the Basin Authority and the MS4 Permittees, these goals are required by the Colorado Department of Public Health and Environment. For the Park and the Stewardship Partners, the goals are voluntary but no less essential for the purpose of communicating the best information available on water resource issues to the broadest audience.

The goals of these primary stakeholders are complimentary in that the Basin Authority can document, participate in, and promote the efforts of all the other entities and can potentially serve as the designated agent to receive and administer funds for certain education and outreach projects and activities in the watershed. The Basin Authority is required by statute to identify and achieve specific water quality goals. It has a relatively stable funding source through tax assessments and the Park user's fee. The Basin Authority can provide leadership and guidance toward delivering a consistent and accurate assessment of the state of the health of Cherry Creek reservoir by promoting awareness of the entire Cherry Creek watershed as an interdependent system.

The Stewardship Partners assist by maintaining contact with a larger group of stakeholders and by coordination and facilitation of conferences, forums, training sessions and volunteer activities. The voluntary association of dedicated individuals representing many different areas of interest and expertise provides for an open exchange of ideas and the flexibility to respond to the needs of the stakeholders through an informal network of colleagues.

The Park appeals to an enormous audience, over 1.5 million visitors each year. The Park is managed to comply with established mandates to protect the state's natural resources and provide a range of recreational and educational activities. Park staff use allocated resources to provide educational programming for some 8,000 participants per year. Interpretive signage is cosponsored through Park funds with additional funds made available by the Basin Authority and other entities. The Park can serve as the physical meeting place for official management activities as well as provide the perfect setting for both classroom and hands-on watershed education promoting public awareness and responsibility. The Park has been working to establish a watershed education center. However, the Park's limited resources are not adequate to support a watershed education center at this time, but by working cooperatively with other stakeholders and community donations this facility could become a reality.

The MS4 Permittees have an immediate responsibility and access to the drainage function of the Cherry Creek watershed. This geographically diverse group has primary responsibilities that go beyond education and public outreach. Rather than develop many separate stormwater quality messages, they will benefit from useful public information delivered with an accurate and consistent message.

The primary strategy set forth in this Education Initiative is to develop and use the strengths that each of the stakeholders bring to establish a communication network, share responsibilities and cost-share in educational activities. The goals of each individual stakeholder may be met by participating in these educational activities. It remains the responsibility of each of the stakeholders to comply with any regulatory requirements to which they are subject. Strategies for the various stakeholders are included in the attached tables. Specific recommendations are made in this plan:

Recommendations – Implement a watershed approach:

- **Establish cohesive educational goals** – This Education Initiative focuses on taking a holistic approach to protecting and preserving the natural resources in the Cherry Creek basin. Various stakeholders have existing goals and specific plans to achieve them. While it is understood that some stakeholders might have unique needs that may not be immediately addressed by a watershed work plan, many education and outreach goals can be implemented as shared programs that serve all participating communities. The creation of a comprehensive and cohesive work plan is an important step towards promoting the watershed approach.
- **Develop communications plan** - While each of the groups of stakeholders identified in this report can and will continue to pursue their own work plans, a communications plan would help coalesce the goals and strategies outlined in Tables 5 and 6. The existing website can be a main component of this—it is designed to serve as a clearinghouse of information and to give residents a centralized location to learn more about the watershed. The communications plan should also provide for a shared list of challenges/issues, stakeholders, specific implementation activities, project materials (e.g. fact sheets), communication protocols (who approves items), and some basics in crisis communications.
- **Join forces** - As part of an ongoing effort to share information and resources, each group should encourage participation in the Stewardship Partners' Education Committee. A combined working group that shares members of the Stewardship Partners, Basin Authority's Technical Advisory Committee, State Park and MS4 Permittees, provides the opportunity to evaluate and share materials and information, schedule activities and document efforts on an annual basis.
- **Compile a budget** – Each of the stakeholders has human and financial resources that can be applied to the implementation of the Education Initiative. The goal would be to identify areas where shared activities and programs could provide cost benefits. With help from the Basin Authority and other stakeholders, the Stewardship Partners' Education Committee can develop the budget information and encourage contributions from

agencies and individuals in order to pool resources to pay for watershed education and outreach.

- **Center for Watershed Education** – Preliminary discussions of a conceptual plan for the design, of a facility, either at the Park or elsewhere in the watershed, should begin. The plan should include specifics as to site alternatives, use, size and budget. Plans should also be made to present the plan to interested groups and individuals along with an incentive plan to make this goal an attractive reality.

Next Steps:

- Stakeholders approve the Cherry Creek Basin Water Stewardship and Education Initiative.
- Encourage MS4 Permittees to incorporate collaboration with the Stewardship Partners to meet their public education and outreach requirements.
- Begin discussing options with Colorado Department of Public Health and Environment to develop public education and outreach activities that may provide MS4 Permittees support for program items 1 and 2 for future permit terms.
- Form working group to implement the above recommendations.

1.0 Scope of Cherry Creek Basin Water Stewardship and Education Initiative

For purposes of this Plan, the basin includes the Cherry Creek Reservoir watershed as defined in Watershed Plan 2003, prepared for the Basin Authority by URS Corporation, August 2003 as well as Cherry Creek below the dam to its confluence with the South Platte River in downtown Denver.

The Stewardship Partners are a voluntary association of a broad range of stakeholders who live or work in the Cherry Creek basin. The Stewardship Partners provide a public forum for promoting active stewardship of the Cherry Creek basin by maintaining a comprehensive list of stakeholders, sponsoring an annual conference and other events such as tours, speaker presentations and workshops. The Stewardship Partners also maintain a website for communication of activities and information.

The Basin Authority operates under state regulatory guidelines: Colorado Department of Public Health and Environment Water Quality Control Commission, Regulation 72, Cherry Creek Reservoir Control Regulation (5CCR 1002-72) (Control Regulation) that specifies education and outreach as a required component of their management efforts.

Cherry Creek State Park has identified education and public outreach as a major component of their master plan for the park.

The land use jurisdictions in the watershed, designated as MS4, are regulated for non-point stormwater controls as part of the National Pollutant Discharge Elimination System (NPDES) permit process. Regulations call for the implementation of six minimum control measures. Two of the six control measures deal specifically with education, outreach and public participation, while the remaining four have educational components built into the permit activities as well.

This Education Initiative includes an organizational profile of the Stewardship Partners as the entity that will facilitate the process to provide a coordinated education and outreach strategy and the plan for implementation (CCSP Organization Profile, Section 2.0).

In order to identify educational needs, resources and opportunities, a section of the Education Initiative is devoted to descriptions of existing education requirements, public outreach efforts and the goals that the various stakeholders have identified in their own planning processes. (Service Profile and Situation Analysis, Section 3.0).

The next step was to assemble the education strategy which combines the various goals, objectives and plans to identify common elements that can be incorporated into one overall plan. This process has identified individual responsibilities that are

best accomplished by one organization and shared responsibilities that will benefit from a coordinated effort. (Education Strategy, Section 4.0)

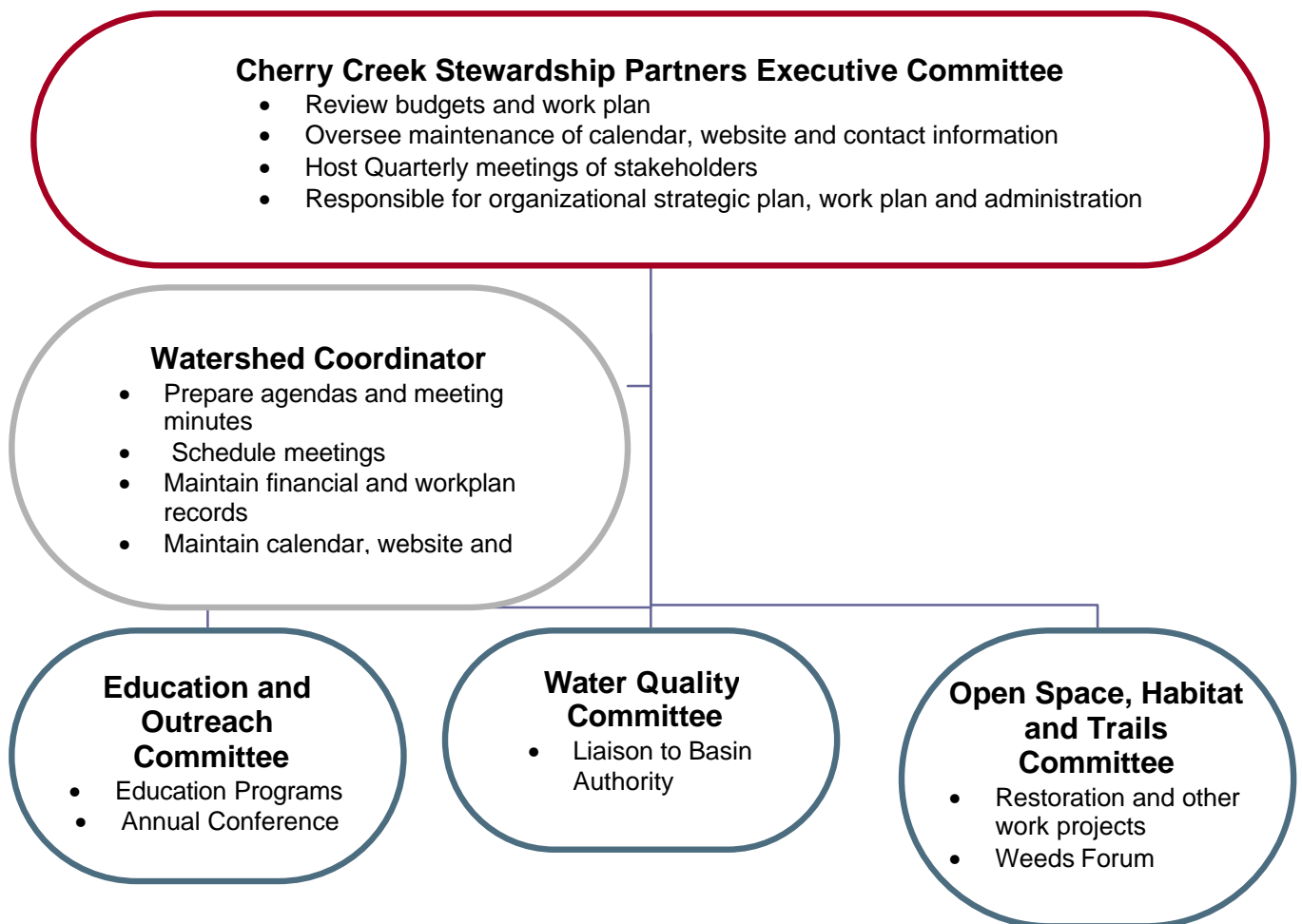
This Education Initiative proposes the implementation of a coordinated education and public information strategy by identifying activities and lead stakeholders. Recognizing that various activities have already been undertaken and given the nature of the parties' ongoing involvement and character, specific activities can be performed by each group. With input from key stakeholders and reference to existing work plans, budgets and other planning tools, we have developed a list of activities that will be used as the basis for implementation of the Cherry Creek Basin Water Stewardship and Education Initiative. (Coordinated Education Approach, Section 5.0).

The Cherry Creek Basin Water Stewardship and Education Initiative is a strategic action plan, which identifies key education and public outreach goals of the stakeholders identified above and proposes a 2-year action plan for education in the watershed, as seen on Table 6.

2.0 Cherry Creek Stewardship Partners Organization Profile

The Stewardship Partners have defined their role by providing regular information-sharing forums and opportunities for participants to consider ways to coordinate and integrate projects and activities that affect water, open space and recreational resources in the Cherry Creek basin. The Stewardship Partners focus their efforts on bringing together stakeholders from the land use jurisdictions, the state and federal resource management agencies, conservation, recreation and historic preservation groups, and the business community.

The structure of the Stewardship Partners includes an Executive Committee made up of representatives from each of the three counties in the basin: Douglas, Arapahoe and Denver as well as a representative from Cherry Creek State Park. Three project-oriented committees: Education and Outreach, Water Quality and Open Space, Habitat and Trails are made up of individuals with specific expertise or interest in the subject areas of each particular committee. Each committee is responsible for presenting a work plan for approval by the Executive Committee. A part-time coordinator provides staff support.



A work plan is generated by the Stewardship Partners which identifies individuals who have volunteered to “champion” a particular project. Leadership of each subcommittee is a voluntary, one-year commitment from an individual with relevant expertise. Each committee is expected to implement its own project specific work plan. Committees generally meet monthly, report to the Executive Committee monthly and report to a broader audience of stakeholders at Quarterly meetings, which are designed to highlight topics of general interest in the basin.

The Stewardship Partners, in furthering their educational goals, have presented five annual conferences and four well-attended public forums addressing ongoing activities such as smart growth, open space and stream quality in the Cherry Creek watershed. The Stewardship Partners have also developed an extensive website for the Basin Authority as well as their own website which is available to provide background on the organization and its member partners as well as links to other related sites. Working with Colorado Watershed Network, the Stewardship Partners have obtained over \$100,000 in grant funding from various entities to undertake timely and innovative projects that address water resource concerns in the watershed.

The Education and Outreach Committee is responsible for promoting public involvement and education by providing various forums and the annual conference as a source of information sharing. The Education and Outreach Committee is the group within the Stewardship Partners organization that has developed a relationship with educators within the watershed. Examples of these educators are Cherry Creek State Park, Project WET, River Watch, the Audubon Society and individual teachers and schools.

A contact list of individuals who have requested information or updates from the Stewardship Partners is maintained for the purpose of communicating meetings, the annual conference, tours or other activities. This contact list is constantly being expanded and is available to Stewardship Partners for the specific purpose of advancing the mission of the group.

3.0 Service Profile and Situation Analysis

In the last several years over 40 citizen-based watershed groups have formed. These groups bring together a wide variety of entities and individuals from within a watershed to work, through consensus, on water resource issues of common concern. The Stewardship Partners are not unique in using the watershed approach, a geographical perspective that connects cities, counties and individuals along a body of water. Like other watershed groups, the Stewardship Partners attempt to address the whole range of land use activities and water resource concerns along Cherry Creek.

However, the Stewardship Partners have developed some unique approaches. A primary difference is that the Stewardship Partners focus on open space as a key stewardship issue, and the fact that they have tied open space protection to water quality enhancement opportunities. The Stewardship Partners are also the first in the State to connect 'smart growth' and water quality issues. In addition, the Stewardship Partners are the first group to integrate the water resource issues of the areas above and below the Cherry Creek reservoir. Most other Colorado watershed groups work primarily with drinking water, sanitation districts, or other groups that have a primary water mission. The Stewardship Partners have engaged representatives from sanitation districts and planning departments, open space departments, trail providers, recreation entities, consulting firms, schools and homeowners associations to address the entire range of land use issues.

The Stewardship Partners provide a forum to implement a watershed approach to protecting the Cherry Creek Watershed. By using a watershed approach, the Stewardship Partners bring together sciences such as hydrology, biology and chemistry, along with economics and social concerns in a process that provides a collaborative framework for land use decisions that affect the entire watershed. Bringing together the wealth of talent, skills and technical expertise of individuals who live and work in the basin, the Stewardship Partners have the opportunity to build consensus, prioritize efforts and leverage limited funding resources.

In this report, we have identified key stakeholders who have an interest in education, active stewardship and public outreach. These stakeholders are:

Cherry Creek Basin Water Quality Authority

The Basin Authority was created by statutory enactment as a quasi-municipal corporation and political subdivision of the state, and is designated as the management agency for the upper Cherry Creek basin under DRCOG's Clean Water Plan. Operating under a Control Regulation, the Basin Authority has been given a mandate to provide public education and outreach activities. To satisfy the Control Regulation, the Basin Authority requested and was awarded an EPA Section 319 grant to focus on best management practices (BMP) education within

the Cherry Creek basin. This BMP education effort offers a comprehensive approach in non-point source education by addressing both new construction and existing development and by providing new tools and information.

The Basin Authority has recently completed the 2003 Watershed Plan which makes several specific recommendations for an education outreach program, including developing a comprehensive public involvement plan, coordinating the regulatory efforts in the basin, collaborating to leverage funding opportunities and participating in habitat restoration and protection programs.

A tabulated listing of the Basin Authority's educational outreach goals is contained in Table 1.

Cherry Creek Stewardship Partners

In previous years, the *Stewardship Partners* have focused outreach activities on key agencies and individuals in order to enhance the collaborative solution and decision-making process. At this point in time, the Stewardship Partners have added a focus of educational activities for the broader public, including K-12 students in the watershed and homeowner associations (HOAs). Accomplishments of the Education Committee to date include six annual conferences, development of the Stewardship Partners website, providing Project WET teacher training and field trips.

A tabulated listing of the Stewardship Partners educational outreach goals is found in Table 2.

Cherry Creek State Park

For hundreds of years, runoff from the Cherry Creek watershed has influenced people, wildlife, and habitats associated with Cherry Creek. Today, the quality and quantity of water flowing into Cherry Creek State Park depends of the actions of many different people living nearby or visiting the park. (Cherry Creek State Park Interpretive Master Plan, ECOS Communications)

The Park has identified education and public outreach as a major component of their master plan for the park. They have developed the Cherry Creek State Park Interpretive Master Plan, which is the basis for the Park's education strategy. According to this report, "Cherry Creek State Park sits poised to become a major leader in watershed education. ...high visibility and visitation help make the park a strong candidate for a wide variety...of educational efforts focused on watershed and non-point source pollution...and vastly expand its interpretive outreach efforts – ultimately creating the regional watershed education center that the park's unique resources warrant."

Currently, the Park provides school programs by request, primarily to classes from kindergarten to sixth grade. Public programs include guided walks, storytelling, activities and prepared programs present to audiences at various locations throughout the Park. The Junior Ranger program is available during the summer months and offers a variety of outdoor experiences and activities for children. Campfire programs are presented on Saturday evenings in the campground amphitheater. Water quality information kiosks are located at strategic points in the park to illustrate the interaction of wetlands, habitat and recreation.

The vision of the Park as the focus of watershed education would call upon extensive resources and relationships needed to support a significant new watershed education facility with appropriate staffing and equipment. A coordinated effort among the Basin Authority, the Stewardship Partners, the business and residential community and all land use jurisdictions in the basin would be needed to implement this project.

A centralized facility could provide a home for the Basin Authority, an education and meeting facility and a focus for water quality education in the Cherry Creek basin and to serve as a statewide resource. The State Park Master Plan recommends a location for the facility within Cherry Creek State Park. Other locations within the watershed could also be considered.

A tabulated listing of Cherry Creek State Park's goals and strategies, compiled from their Interpretive Master Plan, is contained in Table 3.

MS4 Permittees

A significant goal in the Cherry Creek watershed is to limit the quantity of pollutants that enter the reservoir and to maintain watershed health through controls on the non-point sources of pollutant loads. Requirements of the MS4 Permittees are to minimize, reduce, and/or prevent pollutant discharges from their municipal separate storm sewer systems (MS4s). The Colorado Water Quality Forum Guidance for Colorado's Storm Water Phase II refers to CRS 61.8(11)(a)(ii)(A) and provides suggestions for meeting regulatory requirements for the public education and outreach minimum control measure. According to this document "It is important to keep in mind that the regulated small MS4 operator has a great deal of flexibility in choosing exactly how to satisfy the minimum control measure requirements."

The MS4 Permittees in the Cherry Creek Basin have formed two cooperative groups: the Arapahoe County Storm Water Co-Op and the Douglas County Storm Water Co-Op. These two groups have become increasingly active in the Stewardship Partners organization in an effort to form partnerships and use existing local programs to promote a coordinated and consistent message. Permittees will use a variety of education and outreach strategies developed for the Cherry Creek basin. The focus of these efforts for the 5 year permit term will be

to continue the existing public education and outreach programs that are in place within the Cherry Creek basin, enhance these programs through feedback and information sharing, and work toward implementing a progressively more comprehensive education and outreach program by the end of the permit term.

A tabulated listing of some standard MS4 Permittee education and outreach goals are presented on Table 4. Not all goals listed in Table 4 are individual goals of a specific MS4 Permittee. This table is meant to provide a broad context and the variety of goals that have been identified in the Cherry Creek watershed

4.0 Common Goals

Cooperation is evident in the communication and networking that currently exists. That collaboration and cooperation will continue and should be encouraged by the identification of common program elements, support for individual programs and implementation of shared programs where two or more stakeholders join efforts to accomplish their education objectives. Understanding the mission of the various groups will allow for the efficient delivery of a consistent message to the broadest audience. Common elements of the education goals for all the entities in the basin include the following:

- **Establish cohesive educational goals** - Produce a document that states areas of cooperation and forms the basis for continued joint efforts in the basin (The Cherry Creek Basin Stewardship and Education Initiative); establish advocates and programs to reach the widest possible audience.
- **Join forces** - Work cooperatively with local developers, land use agencies, watershed groups, community groups to promote holistic watershed health; demonstrate a unified, cooperative effort highlighting what is unique about the Cherry Creek watershed.
- **Develop a communications plan** - Promote public awareness and involvement in watershed management; reinforce important messages; promote partnerships; develop signage, web-based information, host activities and events and share contact information; provide an annual summary of activities that promote water quality education and outreach.
- **Develop a budget and funding plan** - Promote good stewardship of water resources through leadership, cooperation, financial support and incentives; establish a network of knowledgeable funding and grant resources.
- **Create a regional watershed education center** – Provide a focus for water education and a resource for the community to advance a wide range of water resource issues. A long-held dream of the leaders at Cherry Creek State Park that could become reality through the cooperative efforts of the stakeholders identified in this report and the larger community. First steps can be taken which would identify the role and mission of the education center and develop a preliminary financing and building plan.

A tabulated listing of education goals for all basin entities is contained in Table 5. The goals identified in Table 5 relate directly to Table 1, Basin Authority Education Goals. Goals identified in each stakeholder work plan, Tables 2 through 4, are organized to show program elements that have common themes and common implementation procedures as they relate to the education goals of the Basin Authority.

5.0 Coordinated Education Approach

In order to provide a consistent message of responsible stewardship of all natural, financial and human resources it is desirable to establish a coordinated education approach. The overall education strategy recommended in this report addresses a number of potential audiences including the development and planning community, K-12 education, State Park visitors, basin residents (HOAs), and elected officials. Documentation of this coordinated approach should facilitate application for funding from organizations outside of the basin such as state or federal agencies, foundations and grant programs.

In order to implement the coordinated education approach, we should make immediate plans to:

- Continue to promote the Cherry Creek Stewardship Partners Annual Conference as the prime networking and information sharing opportunity in the Cherry Creek basin.
- Approve the Cherry Creek Basin Water Stewardship and Education Initiative.
- Encourage MS4 Permittees to incorporate collaboration with the Stewardship Partners to meet their public education and outreach requirements.
- Begin discussing options with Colorado Department of Public Health and Environment to develop public education and outreach activities that may MS4 Permittees support for program items 1 and 2 for future permit terms.
- Form working group to implement the above recommendations.

The Education Initiative is designed to share audiences and resources in a joint effort to promote a consistent message of active stewardship of our water resources in order to implement the education goals common to all entities.

Table 6 contains a tabulated listing of activities already underway or planned beginning in 2004.

TABLES

Table 1. Basin Authority Education Goals

Reference Document	Goal/Requirement	Strategy	Additional Details
Control Regulation – Section 72.6(2)	Develop and implement a Public Info & Education Program	Focus on abatement of known non-point water quality impairments from agriculture, individual sewage disposal (septic) systems, large lot development (>1 acre)	Voluntary, incentive based program approach; focus on general public, workforce & local government sectors
		Focus on prevention of significant threat to WQ from present and future activities	
Control Regulation – Section 72.7(2)(a)	Distribute educational materials	Residential, industrial, agricultural, and commercial sources	
Watershed Plan 2003	Work cooperatively with watershed groups and local agencies to promote holistic watershed health	Educate and empower local land use agencies on the appropriate implementation of enhanced BMP's for all new development,	
		Publicize practices that reduce phosphorus loads from new development	
		Coordinate education and outreach of NPDES stormwater Phase I & II with Cherry Creek entities	In process with CCSP and others
	Promote public awareness and involvement in watershed management	Enhance Cherry Creek and its tributaries through volunteer efforts	In process with CCSP
		Implement education and outreach programs, including a website,	In process with CCSP
		Develop and implement public information/public involvement plan,	In process with CCSP
		Highlight protected riparian areas, preserved buffer zones and conservation easements w/ signage, kiosks, etc.,	
	Promote good stewardship of water resources through leadership, cooperation, financial support and incentives	Utilize citizen groups and organization to inventory stream conditions and rehabilitate problem areas	
		Encourage regional development of pollution reduction facilities (PRF) through cooperative arrangements	Ex. Conservation Reserve Program; Wetlands Reserve Program; Wildlife Habitat Incentives Program
		Work to develop new funding mechanisms to meet watershed goals	

Table 2. CC Stewardship Partners Educational Goals

Reference Document	Goal	Strategy	Additional Details
<i>Stewardship Practices for the Cherry Creek Watershed</i> (Workplan '04)	Periodic Forums	Quarterly meetings on issues of broad interest, provide speakers, updates from committees and networking opportunities (3 regular meetings and annual conference)	Co sponsored by Basin Authority, EPA and member organizations
		Management of the Cherry Creek Reservoir	In process
		Conduct at least one basin-wide tour each year and co-sponsor at least one volunteer work/education day in each of RA signatories jurisdictions (reliant upon strong local support but will actively recruit participation by at least 3 entities each year)	2004 includes commitments from Denver, Douglas and Arapahoe counties and, possibly, Centennial (Bow Tie)
	Cherry Creek Smart Growth for Clean Water Partnership	Publish in print, CD and internet Partners Smart Growth Report for Clean Water	Report completed 12/03
		Work with land use jurisdictions to implement Regional Agreement	In process
		Present forum on Regional Agreement and Smart Growth Project	Resolve issues across jurisdictions
	Cherry Creek Basin Water Stewardship and Education Initiative	Develop action plan and commence initial implementation	In process
		Expand Project WET training	In process Strong member support
		Develop & distribute a brochure to educate general public about WQ issues	In process
	Work with Colorado River Watch program	Recruit and train 2 –3 additional volunteer water quality monitoring groups in the basin	May adapt to incorporate other watershed health measurements
		Coordinate a demonstration water quality monitoring workgroup of all monitoring groups in the basin	
		Develop a lay person water quality data analysis demonstration tools	
		Develop a demonstration WQ Assessment and State of the Watershed Report	

Table 2. CC Stewardship Partners Educational Goals

Reference Document	Goal	Strategy	Additional Details
CCSP Smart Growth for Clean Water Report (EPA funding proposal '05)	Engage local land use agencies, developers and contractors to incorporate Smart Growth for Clean Water principles	Incorporate SGCW tools in planning process Encourage SGCW community values Measure quantitative benefits of SGCW	Work with national representatives of Smart Growth to bring in national examples and success stories
	Engage local land use agencies, developers and contractors to build agreement to remove regulatory barriers	Bring together planners and developers to identify barriers and effective incentives, follow up with developers who have indicated interest in the Phosphorus reduction program (Phosphorus Facilitator)	Identify tools that have been used successfully elsewhere, sponsor award for "watershed smart growth" success
	Establish monitoring program to measure quantitative benefits of watershed-based Smart Growth strategies as identified in case studies	Identify monitoring that already exists, propose additional monitoring, use expertise of Partners to develop protocols and evaluate criteria for a variety of monitoring scenarios	Evaluate existing case studies for environmental and economic benefits, publish results in annual report
	Encourage understanding and advocacy for water quality and watershed smart growth among HOA's and other local community groups	Compile list of HOAs in CC basin, compile information on BMP maintenance and watershed management, provide written materials and speakers to present information to various citizen groups	Sponsor Cherry Creek Stewardship Partners Volunteer Stewardship Award
	Establish network of knowledgeable funding and grant resources	Give frequent periodic updates on funding opportunities and encourage joint grant requests to come from partners within the CC basin	GOCO, State Trails, Watershed Protection Fund, EPA
	Produce document that states areas of cooperation and forms the basis for continued joint efforts in the basin	Regional Agreement signed by Arapahoe County Board of Commissioners, City and County of Denver, Douglas County Board of Commissioners, City of Glendale, City of Greenwood Village, Town of Parker and City of Centennial	Continue to promote regional understanding at the highest official level, provide annual update on progress to signatories of the RA, build investment in the success of the agreement by meeting its stated goals

Table 2. CC Stewardship Partners Educational Goals

Reference Document	Goal/Requirement	Strategy/Action	Additional Details
CCSP Smart Growth for Clean Water Report (EPA funding proposal '05)	Establish a watershed advocate to oversee program for phosphorus reduction (Phosphorus Facilitator Team)	Outline of scope and recommendations sent to Basin Authority	Local jurisdiction and Basin Authority funded team currently hard at work
		Work with Phosphorus Facilitator Team to provide resources to interested developers who may not be funded by Basin Authority or others – keep them in the loop	In process
	Identify parcels in watershed that are critical to the mission of the Partners	Through informal and ongoing networking opportunities	
	Engage contractors, inspectors and maintenance staff to encourage effective installation and maintenance of BMPs	Develop an O&M Manual for prominent BMPs Coordinate efforts with NPDES entities	Identify, review and evaluate existing maintenance manuals
	Document and share results and developed processes	Collaborate with other watershed groups outside the CC basin, share information, results, techniques	Recognize outstanding Partners

Table 3. MS4 Permittee Education Goals

Basin Entity	Reference Document	Goal/Requirement	Strategy/Action	Additional Details
MS4 Permittees: See List at Appendix	CRS 61.8(11)(a)(ii)(A) and Colorado Water Quality Forum <u>Guidance for Colorado's Storm Water Phase II</u>	Promote public education and outreach on storm water impacts.	Participation in cooperative group with same goals and strategies to pool resources.	Cooperative effort with Basin Authority and/or other MS4 Permittees and Cherry Creek Stewardship Partners
		Implement a public education program to distribute educational materials to the community or conduct equivalent outreach activities about the impacts of storm water discharges on local water bodies and the steps that the public can take to reduce pollutants in stormwater runoff.	Prepare annual newspaper article on WQ issues and non point source education.	Cooperative effort with Basin Authority and/or other MS4 Permittees and Cherry Creek Stewardship Partners.
		Develop and distribute Water Quality brochures	Form can take mailed brochure; mailed flyer in with water bill; counter top display; or display rack	
		Educational programs for school age children	Project WET program currently in place with Cherry Creek Stewardship Partners (Evaluate w/r/t Geography Standard 3, Science Standard 4 and 5)	

Table 3. MS4 Permittee Education Goals

Basin Entity	Reference Document	Goal/Requirement	Strategy/Action	Additional Details
MS4 Permittees: See List at Appendix	CRS 61.8(11)(a)(ii)(A) and Colorado Water Quality Forum <u>Guidance for Colorado's Storm Water Phase II (cont.)</u>	Implement a public education program to distribute educational materials to the community or conduct equivalent outreach activities about the impacts of storm water discharges on local water bodies and the steps that the public can take to reduce pollutants in stormwater runoff. (cont.)	Participate in events such as Water or River festivals, Home & Garden shows	CCSP plans Water Festival at Cherry Creek in conjunction w/ Basin Authority and/or other MS4 Permittees and Cherry Creek Stewardship Partners
	Arapahoe County Storm Water CO-OP <u>Storm Water Permit Measurable Goals</u>	Determine appropriate management practices (BMPs), in this case informational and educational methods to be used, and measurable goals for this minimum control measure.	Participate in cooperative group with same goals and strategies to pool resources.	Formed Douglas County Co-op Group and Arapahoe County Co-op Group, participate with Cherry Creek Stewardship Partners
		Develop signage to identify tributaries, creeks, drainageways, access point, construction sites and permanent BMPs	Cooperative effort with Basin Authority and/or other MS4 Permittees and Cherry Creek Stewardship Partners.	Watershed name, contact info, WQ message
		Stormwater drain and inlet labeling and/or stenciling	Cooperative effort.	CC priority watershed
		Web site development and upkeep	Cooperative effort.	Outreach for public and agencies
		Public Meetings to distribute water quality information	Cooperative effort.	Public meetings; hosting booth at community event or county fair, or at conferences
		Community volunteer cleanup projects	Cooperative effort with Basin Authority and/or other MS4 Permittees and Cherry Creek Stewardship Partners.	Volunteer stream clean up day; volunteer planting of wetlands

Table 3. MS4 Permittee Education Goals

Basin Entity	Reference Document	Goal/Requirement	Strategy/Action	Additional Details
MS4 Permittees: See List at Appendix	Arapahoe County Storm Water CO-OP <u>Storm Water Permit Measurable Goals (cont.)</u>	Educate public regarding Household Hazardous waste recycling, Round-up or Pick-up activities in each jurisdiction	Cooperative effort with Basin Authority and/or other MS4 Permittees and Cherry Creek Stewardship Partners.	Utilize existing information provided through Colorado State University Cooperative Extension 'Homeowner's Guides'
		Provide hot line number for public use to report water quality issues and problems		Possible link to Basin Authority website
		Target local businesses with informational materials appropriate to the particular industry type on potential stormwater impacts of improper waste disposal and illegal discharges.		Residential, industrial, agricultural, and commercial sources, chemical de-icing operations, retail outdoor storage of fertilizers; turf farms & landscape/plant operations; animal feeding operations
	Specific industries and audiences identified in 5 CCR 1002-72 Control Regulation – Section 72.7(2)(a)		Fact sheets for developer, design engineers, elected officials, citizens, contractors, i.e. 319 Grant sponsored series of FACT SHEETS (Series 1- 10 Brown & Caldwell	

Table 4. Cherry Creek State Park Educational Goals

Cherry Creek State Park Interpretive Master Plan:

For hundreds of years, runoff from the Cherry Creek watershed has influenced people, wildlife and habitats associated with Cheery Creek. Today, the quality and quantity of water flowing into Cherry Creek State Park depends on the actions of many different people living nearby or visiting the park.

Goal/Requirement	Strategy	Additional Information
Create regional watershed education center	Raise awareness of watershed and non-point pollution issues: convey the concept of a watershed and the impact individuals have on water quality.	Beaver Pond/Twelve Mile picnic area site recommended Take advantage of unique opportunity to reach large numbers of visitors Develop resource library
Interpretation throughout the park will demonstrate a unified, cooperative effort, highlighting what is unique about Cherry Creek State Park and providing connections to bigger issues and concepts.	Focus on interpretation	
Reinforce important messages	Make meaningful connections among the multiple values of outdoor recreation quality and opportunities, wildlife habitat and water quality.	
	Focus attention on what everyone in the basin can do to promote better quality of life and water quality.	
Improve visitor learning and self-discovery	Recruit, train and manage volunteer naturalists	
	Provide training and learning resources	
	Coordinate with other State Parks	
	Send the land patrol/interpretation ranger to the Western Regional Interpretive Skills Training each year	

Table 4. Cherry Creek State Park Educational Goals

Goal/Requirement	Strategy	Additional Information
Develop programs to reach K-6 grade that correlate to state standards and assessments	Pursue environmental workshop opportunities, i.e. Projects WILD, WET, Project Learning Tree, Colorado Foundation for Water Education, Wonder in Nature-Wonder in Neighborhoods	Cooperative effort with Basin Authority and/or MS4 Permittees and Cherry Creek Stewardship Partners
	Develop outreach aimed specifically at area educators	Cooperative effort with Basin Authority and/or MS4 Permittees and Cherry Creek Stewardship Partners
Develop programs to reach the general public	Create and maintain web page	Link to Basin Authority and/or MS4 Permittees and Cherry Creek Stewardship Partners
	Organize and host an annual watershed festival	Cooperative effort with Basin Authority and/or MS4 Permittees and Cherry Creek Stewardship Partners
	Improve signage and provide self-guided trail maps, park orientation brochure and kid's activity sheet	See Partners brochure efforts
	Establish Roving Interpretation	Focus efforts on opportunities to target audience, i.e. swimmers
	Provide an Interpretive Ranger	Pursue outside funding for additional programming and staff
	Support Junior Ranger Program	Pursue outside funding for additional programming and staff
	Expand the volunteer program	Pursue outside funding for additional programming and staff
	Support Campfire Program	Pursue outside funding for additional programming and staff
	Expand school programs	Pursue outside funding for additional programming and staff
	Develop Teacher's activity and resource guide specifically for Cherry Creek State Park	Pursue outside funding for additional programming and staff
	Explore interpretation for corporate groups	Pursue outside funding for additional programming and staff
	Implement program evaluation strategy	Possible opportunity with Partners Education Committee
	Water/boating safety	Add link to Park's educational theme of watershed connections utilizing existing training materials

Table 5. Education Goals – Common Elements

Goals	Basin Authority	Partners	Cherry Creek State Park	MS4 Permittees
Establish cohesive educational goals	Develop and implement a Public Info & Education Program	Cherry Creek Basin Water Stewardship and Education Initiative -Develop action plan and commence initial implementation	Create regional watershed education center	Promote public education and outreach on storm water impacts.
		Establish a watershed advocate to oversee program for phosphorus reduction; Follow up with developers who have indicated interest in the Phosphorus reduction program (Phosphorus Facilitator Team)	Develop programs to reach K-6 grade that correlate to state standards and assessments	Implement a public education program to distribute educational materials to the community or conduct equivalent outreach activities about the impacts of storm water discharges on local water bodies and the steps that the public can take to reduce pollutants in stormwater runoff.
	Distribute educational materials	Establish monitoring program to measure quantitative benefits of watershed-based Smart Growth strategies as identified in case studies	Develop programs to reach the general public	
		Work with Colorado River Watch program		

Table 5. Education Goals – Common Elements

Goals	Basin Authority	Partners	Cherry Creek State Park	MS4 Permittees
Join forces	Work cooperatively with watershed groups and local agencies to promote holistic watershed health	Engage local land use agencies, developers and contractors to incorporate Smart Growth for Clean Water principles	Interpretation throughout the park will demonstrate a unified, cooperative effort, highlighting what is unique about Cherry Creek State Park and providing connections to bigger issues and concepts.	Participate in cooperative group with same goals and strategies to pool resources and to leverage existing expenditures (Strategy/Action)
		Engage local land use agencies, developers and contractors to build agreement to remove regulatory barriers and to propose effective incentives, develop and deliver consistent training programs		Determine appropriate management practices (BMPs), in this case informational and educational methods to be used, and measurable goals for this minimum control measure.
		Engage contractors, inspectors and maintenance staff to encourage effective installation and maintenance of BMPs		Stormwater drain and inlet labeling and/or stenciling
		Encourage understanding and advocacy for water quality and watershed smart growth among HOA's and other local community groups		

Table 5. Education Goals – Common Elements

Goals	Basin Authority	Partners	Cherry Creek State Park	NPDES
Develop communications plan	Promote public awareness and involvement in watershed management	Periodic Forums	Reinforce important messages	Public Meetings to distribute water quality information
		Promote Cherry Creek Smart Growth for Clean Water Partnership	Improve visitor learning and self-discovery	Educate public regarding Household Hazardous waste recycling, Round-up or Pick-up activities in each jurisdiction
		Produce document that states areas of cooperation and forms the basis for continued joint efforts in the basin		Develop signage to identify tributaries, creeks, drainageways, access point, construction sites and permanent BMPs
		Document and share results and developed processes		Stormwater drain and inlet labeling and/or stenciling
			Target local businesses with informational materials appropriate to the particular industry type on potential stormwater impacts of improper waste disposal and illegal discharges.	
			Provide hot line number for public use to report water quality issues and problems	
			Web site development and upkeep	

Table 5. Education Goals – Common Elements

Goals	Basin Authority	Partners	Cherry Creek State Park	NPDES
Develop budget and funding plan	Promote good stewardship of water resources through leadership, cooperation, financial support and incentives	Establish network of knowledgeable funding and grant resources		Participate in cooperative group with same goals and strategies to pool resources and to leverage existing expenditures (Strategy/Action)

Table 6. 2-Year Action Plan for Education in Watershed

Strategy	Objective	Activities Year 1	Project Lead	Activities Year 2	Project Lead
Educate and empower local land use agencies on the appropriate implementation of enhanced BMP's for all new development	Establish a watershed advocate to oversee program for phosphorus reduction	Phosphorus Facilitation Team – Identify and work on two projects with local developers	Cherry Creek Basin Water Quality Authority TAC/Phosphorus Facilitator Team	Phosphorus Facilitation Team Continue program to identify and work on two additional projects with local developers	Cherry Creek Basin Water Quality Authority TAC/Phosphorus Facilitator Team
	Follow up with developers who have indicated interest in the Phosphorus reduction program	Recruit active participation by area developers in CCSP Stewardship activities, tours and projects	Partners Water Quality Committee and Phosphorus Facilitator Team	Schedule tours and conference opportunities to showcase progress with Phosphorus Facilitation Team	Partners Water Quality Committee and Phosphorus Facilitator Team
	Engage local land use agencies, developers and contractors to build agreement to remove regulatory barriers and to propose effective incentives	Schedule and facilitate meetings with local land use agencies to determine current status of land use planning for water quality/quantity, research PUD water quality guidelines	Partners Water Quality Committee	Develop and conduct two 1/2 day technical forums for developers and local land use agencies. These forums use the case study approach and specific recommendations from the Smart Growth Report and the Open Space Conservation and Stewardship Plan.	Partners Water Quality Committee
	Engage contractors, inspectors and maintenance staff to encourage effective installation and maintenance of BMPs	Schedule and facilitate meetings to gather existing information and practices w/r/t BMP installation and maintenance, evaluate and present findings at Quarterly Meeting of the CCSP	Partners Water Quality Committee and Phosphorus Facilitator Team	Develop a maintenance checklist for the prominent enhanced BMPs that are being highlighted for use in the watershed. Prepare a presentation on operation and maintenance issues.	Partners Water Quality Committee and Phosphorus Facilitator Team
Publicize practices that reduce phosphorus loads from new development	Gather information about the monitoring programs and data collection already in place in the Cherry Creek watershed for review by members of the Cherry Creek Stewardship Partners.	Compile applicable monitoring criteria from UDFCD, and elsewhere, to create a pilot monitoring program. We will rely on the technical expertise of the Partners to evaluate criteria and develop protocols.	Partners Executive Committee	Sponsor an annual Cherry Creek Stewardship Award for sustainable Smart Growth practices.	Partners Conference Committee

Table 6. 2-Year Action Plan for Education in Watershed

Strategy	Objective	Activities Year 1	Project Lead	Activities Year 2	Project Lead
	To establish a monitoring program to measure the quantitative benefits of watershed-based Smart Growth strategies as identified in the case studies	Monitor the case study sites for both environmental and economic benefits and document the phosphorous reductions and incentives provided to developers. Publish results in annual report that documents Smart Growth practices throughout the watershed	Phosphorus Facilitation Team/Partners Water Quality Committee	Continue to monitor the case study sites, document and publish results in such a way that emphasizes practices throughout the watershed	Phosphorus Facilitation Team/Partners Water Quality Committee
	See additional outreach strategies in Coordinate education and outreach... below				
Coordinate education and outreach of NPDES Stormwater Phase I & II with Cherry Creek entities		Quarterly meetings on issues of broad interest, provide speakers, updates from committees and networking opportunities (3 regular meetings and annual conference)	Partners Executive Committee	Quarterly meetings on issues of broad interest, provide speakers, updates from committees and networking opportunities (3 regular meetings and annual conference)	Partners Executive Committee
		Participation in cooperative group with same goals and strategies to pool resources Arapahoe County Coop, Douglas County	NPDES Permittees	Participation in cooperative group with same goals and strategies to pool resources Arapahoe County Coop, Douglas County	NPDES Permittees
		Attend public meetings; host activities at community events, county fairs, and conferences	NPDES Permittees	Attend public meetings; host activities at community events, county fairs, and conferences	NPDES Permittees
Work to develop new funding mechanisms to meet watershed goals		Establish network of knowledgeable funding and grant resources	Partners Executive Committee	Update websites with links to key funding sources, host workshops to build awareness of existing funding sources and to develop proposals	Partners Executive Committee
		Research new funding mechanisms to meet watershed goals	Cherry Creek Basin Water Quality Authority	Establish permanent funding source for leveraging grants and other funding opportunities	Cherry Creek Basin Water Quality Authority

Table 6. 2-Year Action Plan for Education in Watershed

Strategy	Objective	Activities Year 1	Project Lead	Activities Year 2	Project Lead
Enhance Cherry Creek and its tributaries through volunteer efforts		Conduct at least one basin-wide tour each year and co-sponsor at least one volunteer work/education day in each of RA signatories jurisdictions (reliant upon strong local support but will actively recruit participation by at least 3 entities each year	Partners Water Quality Committee Partners Open Space, Habitat and Trails Committee,	Conduct at least one basin-wide tour each year and co-sponsor at least one volunteer work/education day in each of RA signatories jurisdictions (reliant upon strong local support but will actively recruit participation by at least 3 entities each year	
		Community volunteer cleanup projects ; Stormwater drain and inlet labeling and/or stenciling	NPDES Permittees	Community volunteer cleanup projects ; Stormwater drain and inlet labeling and/or stenciling	NPDES Permittees
	Encourage understanding and advocacy for water quality and watershed smart growth among HOA's and other local community groups	Publish reports, newsletters and make articles available to HOA's and other media	Partners Executive Committee, NPDES Permittees	Publish reports, newsletters and make articles available to HOA's and other media	Partners Executive Committee, NPDES Permittees
	Produce document that states areas of cooperation and forms the basis for continued joint efforts in the basin	Reinforce advantages and results of applying principles agreed to by signers of the Regional Agreement through meetings, tours and updates	Partners Executive Committee	Reinforce advantages and results of applying principles agreed to by signers of the Regional Agreement through meetings, tours and updates	Partners Executive Committee
	Produce document that states areas of cooperation and forms the basis for continued joint efforts in the basin (cont.)	Approve Cherry Creek Basin Water Stewardship and Education Initiative	CC Basin Authority, CCSP	Implement Cherry Creek Basin Water Stewardship and Education Initiative	CC Basin Authority, CCSP, NPDES Permittees
	Develop and implement public information/public involvement plan	Develop action plan and commence initial implementation, expand Project WET training, develop & distribute a brochure to educate general public about WQ issues, update website regularly	Partners Education Committee/ Cherry Creek Basin Water Quality Authority TAC/NPDES Permittees	Implement and monitor training activities and education materials, update website regularly	Partners Education Committee/ Cherry Creek Basin Water Quality Authority TAC/NPDES Permittees
		Distribute educational materials	NPDES Permittees	Distribute educational materials	NPDES Permittees
	Highlight protected riparian areas, preserved buffer zones and conservation easements w/ signage, kiosks, etc.,	Drainageway, Access point, Construction, Permanent BMP signage; Stormwater drain and inlet labeling and/or stenciling	NPDES Permittees,	Drainageway, Access point, Construction, Permanent BMP signage; Stormwater drain and inlet labeling and/or stenciling	NPDES Permittees,

Table 6. 2-Year Action Plan for Education in Watershed

Strategy	Objective	Activities Year 1	Project Lead	Activities Year 2	Project Lead
		Conduct at least one basin-wide tour each year and co-sponsor at least one volunteer work/education day in each of RA signatories jurisdictions (reliant upon strong local support but will actively recruit participation by at least 3 entities each year	Partners Open Space, Habitat and Trails Committee	Conduct at least one basin-wide tour each year and co-sponsor at least one volunteer work/education day in each of RA signatories jurisdictions (reliant upon strong local support but will actively recruit participation by at least 3 entities each year	Partners Open Space, Habitat and Trails Committee
	Utilize citizen groups and organization to inventory stream conditions and rehabilitate problem areas (See Publicize practices that reduce phosphorus loads...above)	Coordinate a demonstration monitoring workgroup, details to be determined in Year One to evaluate the Creek as a whole including habitat, recreation, water quality and quantity issues	Partners Education Committee (initially with support of Open Space Committee)	Coordinate a demonstration monitoring workgroup	Partners Committee or volunteer work group
		Stormwater drain and inlet labeling and/or stenciling	NPDES Permittees	Encourage understanding and advocacy for water quality and watershed smart growth among HOA's and other local community groups	
		Participate in agricultural land habitat protection and restoration	Cherry Creek Basin Water Quality Authority TAC	Establish permanent funding source for leveraging grants and other funding opportunities	Cherry Creek Basin Water Quality Authority TAC
		Recruit members of the agricultural community to take part in Partners' sponsored tours and activities	Partners Education Committee	Sponsor ½ day forum on farmland water quality, quantity and habitat protection/restoration	Partners Education Committee
	Encourage regional development of pollution reduction facilities (PRF) through cooperative arrangements (See Phosphorus Facilitator Team above)	Establish a watershed advocate to oversee program for phosphorus reduction (Phosphorus Facilitator Team)	Cherry Creek Basin Water Quality Authority TAC	Follow up with developers who have indicated interest in the Phosphorus reduction program (Phosphorus Facilitator Team)	Cherry Creek Basin Water Quality Authority TAC with additional support from Partners Water Quality Committee
	Recycling	NPDES activity		NPDES	
	Hot Line Number	NPDES activity		NPDES	

Appendix A

Water Education Resources

Cherry Creek Stewardship Partners

www.cherry-creek.org

Cherry Creek Basin Water Quality Authority

www.cherrycreekbasin.org

Colorado Foundation for Water Education

www.cfwe.org

Colorado Watershed Assembly

www.coloradowater.org

Colorado Watershed Network

www.coloradowatershed.org

Colorado State University Extension Service

www.ext.colostate.edu

Colorado Department of Public Health and Environment

Nonpoint Source Program

nps@state.co.us

Pollution Prevention Program

www.coloradop2.org

Appendix B

MS4 Permittees in the Cherry Creek Basin

Arapahoe County

Arapahoe County Water and Wastewater Authority

Castle Pines Metropolitan District

Castle Pines North Metro District

Castle Rock, Town of

Centennial, City of

Centennial 25 Metropolitan District

City of Centennial

Cherry Creek School District No. 5

Cherry Creek State Park

Douglas County

Douglas County RE 1 School District

E-470 Public Highway Authority

East Cherry Creek Valley Water and Sanitation District

Greenwood Village, City of

Inverness Water and Sanitation District

Lincoln Park Metropolitan District

Lone Tree, City of

Meridian Metropolitan District

Stonegate Village Metropolitan District