



DOUGLAS COUNTY
CONSERVATION DISTRICT
2019 Update





OUR HISTORY

This is why we were created and what drives us today

WHAT IS THE DISTRICT?

- *Political Subdivision of the State*
- *Receives some public funds based on this designation*
- *Certain laws apply to Special Districts*
- *Supervisors are unpaid, elected officials*



DOUGLAS
—CONSERVES—



DISTRICT OBLIGATIONS

Essentially, the District promotes implementation of conservation practices within the county.



DOUGLAS
—CONSERVES—



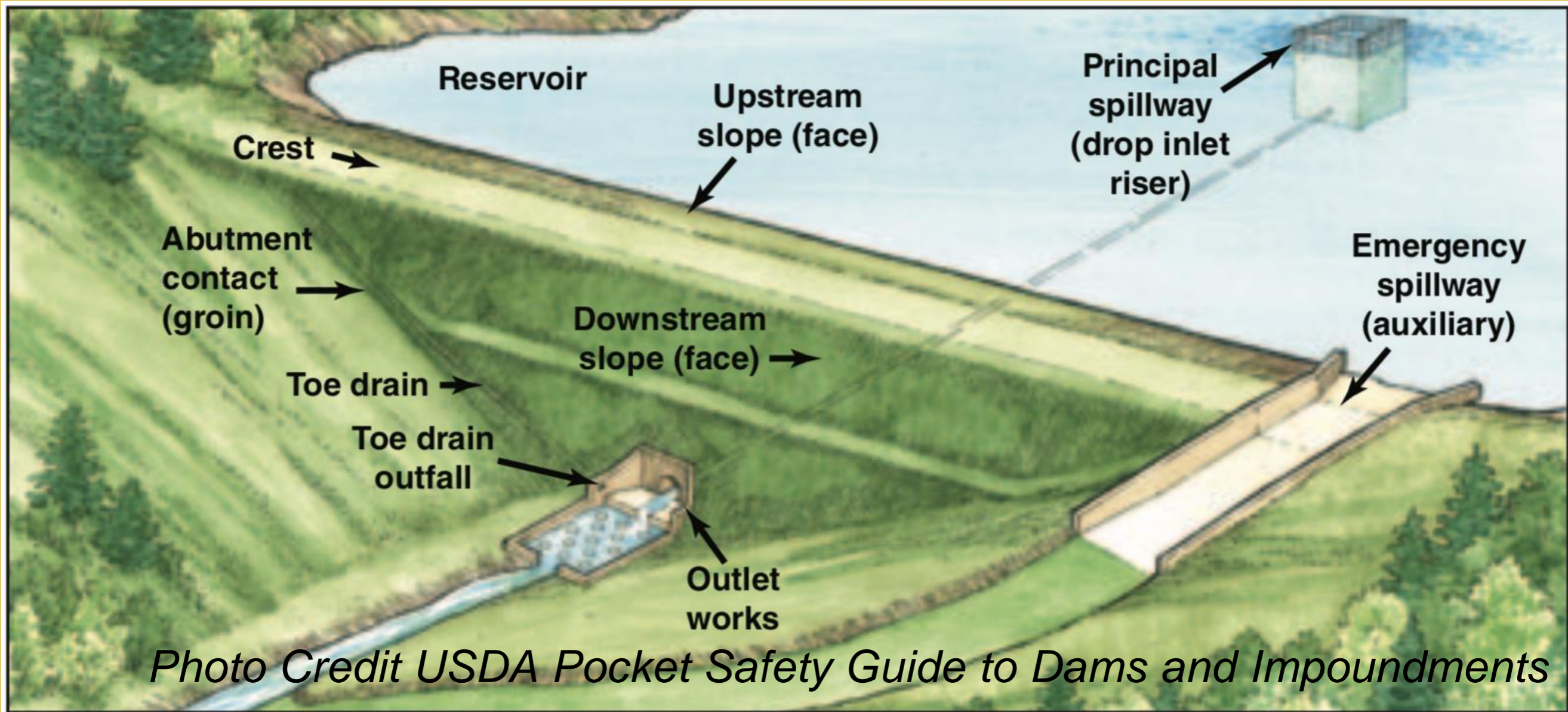


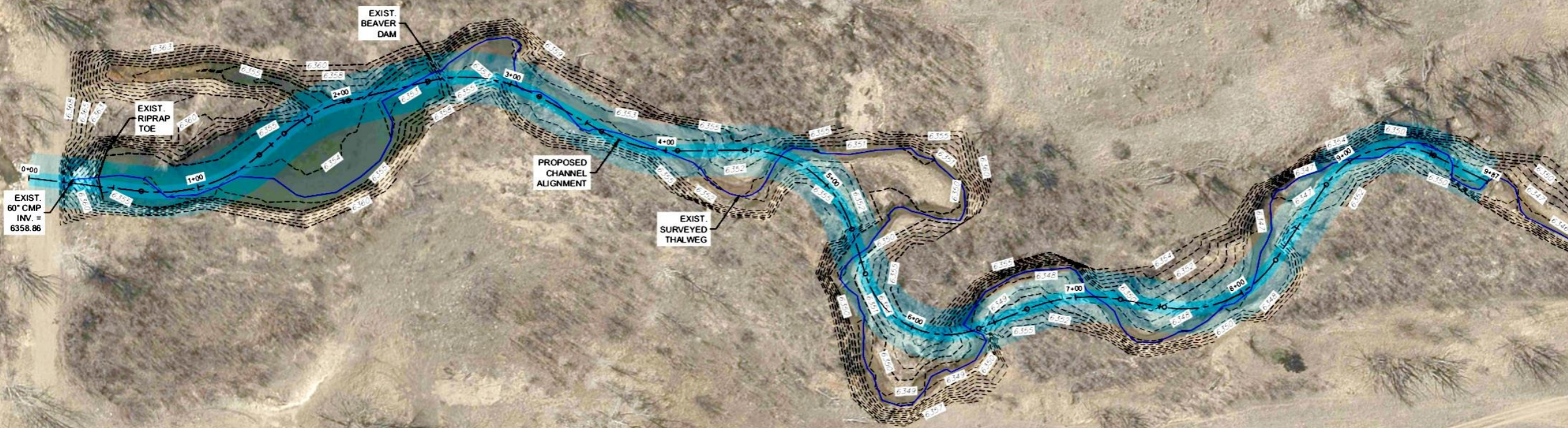
Photo Credit USDA Pocket Safety Guide to Dams and Impoundments

WATERSHED DAMS

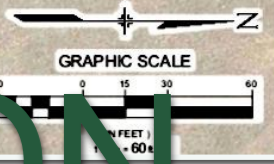
Douglas County, Natural Resource Conservation Service, Douglas County Conservation District Partnership



Know what's below. Call before you dig.



**Blue is the proposed channel alignment
overtop current stream path.**

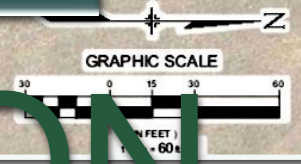


STREAM RESTORATION PROJECTS

East Plum Creek Restoration Partnership



EXIST.
60" CMP
INV. =
6358.86



STREAM RESTORATION PROJECTS

Working with others toward a common goal



STREAM RESTORATION PROJECTS

Detroit Riprap removal



STREAM RESTORATION PROJECTS

Native grasses and pollinators

Native shrubs and trees

Native sedges and forbs... did we say native?



THIS IS STEWARDSHIP

*Helping people help the land
by promoting projects through education to further
the long-term sustainable use of natural resources.*

COMMUNITY

INVOLVEMENT

- ***Youth Conservation Camps***
- ***Scout Gold & Eagle Awards***
- ***School Gardens***
- ***Riparian Planting Projects***
- ***Engineering & STEM Focused Education***
- ***Habitat Creation & Maintenance***
- ***Edible Landscapes***
- ***Pollinator Gardens***
- ***Conservation Workshops***





DIGGIN MY DOUG

School Curriculum



*When you're in a dark place,
You sometimes tend to think
You've been buried.*

Perhaps you've been planted.

Bloom.

PLANT SALES

.....
DouglasConserves.Org



penstemon aspen hackberry willow
mahogany spirea thimbleberry
maple serviceberry manzanita
saltbrush dogwood twinberry peach
apple plum currant raspberry
snowberry buffaloberry oak fir
cottonwood crabapple catalpa
cherry ... etc.

PLANT SALES



Locally grown

Ordered in the winter

Delivered in the spring

Check out our website for the order form!

PLANT SALES

DouglasConserves.Org

Got your raffle ticket?

DOUGLAS COUNTY CONSERVATION DISTRICT

Thank you for your support of conservation.

DouglasConserves.Org

